



Biomedical accessories

For jobs where accessory is always essential...

TLV Healthcare

Biomedical Equipments

A complete range dedicated to Healthcare professionals

Because Healthcare professionals job is everyday more and more demanding, TLV proposes a high Quality accessories range answering to caring units comfort and safety requirements for :

Light for caring spaces

Perfect vision of patient, documents and equipments participates to the medical information performance, the diagnosis making or therapy acting.

Page 3

Safe environments

Quick and reliable mounting of therapeutic equipments reduces injuries risk and ensures a take in charge avoiding waste of time.

Page 4

Keep within reach

In emergency situation, indispensable equipment instant availability procures a not inconsiderable gain of time and efficiency.

Pages 5 & 6

Every and any task optimization

Rational departments organisation permits to pateint care teams to collaborate efficiently to ensure the best take in care to their patients within serenity.

Pages 7 & 8

Put within sight and protect from prying eyes

Good medical informations visualization improves patients rigorous monitoring. Privacy protection participates to build a positive and worthy ambiance between patient care teams, patients and their visitors.

Page 9



Research & Development performance, care brought to manufacturing and materials used allows TLV to put at your disposal reliable and performing Biomedical accessories.

Lamp with gooseneck arm integrated switch (without mount)



Ref. 519121

Lamp with gooseneck arm integrated dimmer (without mount)



Ref. 519122

Lamp with double joint arm integrated switch (without mount)



Ref. 519119

Lamp with double joint arm integrated dimmer (without mount)



Ref. 519120

LED multifunctional lamp with gooseneck arm (without mount)



Ref. 519144



Rail clamp for lamp

Ref. 519124



Wall mount for lamp

Ref. 519123



Tube clamp for lamp

Ref. 519125

LED examination lamp rail mounted



Ref. 519142

LED examination lamp wall mounted



Ref. 519143

Uncentered 350 mm length rail on clamp



Centered 350 mm length rail on clamp



Double 650 mm length rail for medical waste disposal



1500 mm length Ø 38 tube holder on clamp



500 mm length Ø 25 tube holder on clamp



Stainless steel 25 x 10 mm wall rail (meter)



Medical waste disposal rail holder for vertical supply box or Multicare



Universal clamp (for rail or tube)

Ref. 519100



Clamp for Ø 18 mm tube

Ref. 519129



Clamp for Ø 25 mm tube

Ref. 519101



Universal thread guide for rail or Ø 38 tube

Ref. 815121

One compartment 410 x 160 x 70 mm probe basket



Ref. 519056

Three compartment 510 x 380 x 70 mm probe basket



Ref. 519057

Mask(s) holder



Ref. 519062

Examination gloves dispenser holder



Ref. 519128



Frame for drawers with one sliding rails kit
Ref. 815491



Documents holder (A3 format)
Ref. 519066



Sliding rails kit (for one drawer or one writing tablet)
Ref. 815490



Writing tablet
Ref. 815479

(a) 70 mm height 525 x 390 drawer Ref. 519023

(a) Stainless steel frame for 8 litres waste bag Ref. 519063



(b) 137 mm height 525 x 390 drawer Ref. 519024
(c) 223 mm height 525 x 390 drawer Ref. 519025



(b) 8 litres waste bags (50 pieces) Ref. 519064

4 hooks in line IV Pole one hand heigth adjustment (for horizontal rail)



Ref. 519108

6 hooks in line IV Pole one hand heigth adjustment (for horizontal rail)



Ref. 519109

3 hooks in T IV Pole one hand heigth adjustment (for horizontal rail)



Ref. 519110

4 hooks in line IV Pole one hand heigth adjustment (for 2 horizontal rails)



Ref. 519112

4 hooks angled IV Pole one hand heigth adjustment (for horizontal rail)



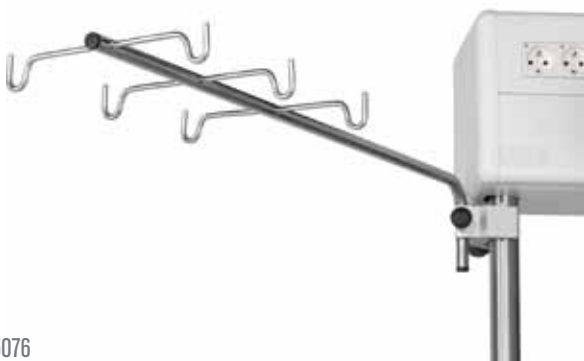
Ref. 519511

4 hooks IV Pole one hand heigth adjustment on extension arm (for Ø 38 tube)



Ref. 815487

6 hooks in line IV Pole (for Ø 38 tube)



Ref. 815076

Dual 4 hooks IV Pole one hand heigth adjustment kit (for Ø 38 tube)



Ref. 815488

Joint arm with Ø 23 tube holders (without mount)



Ref. 519113

1000 mm length Ø 25mm tube on extension arm



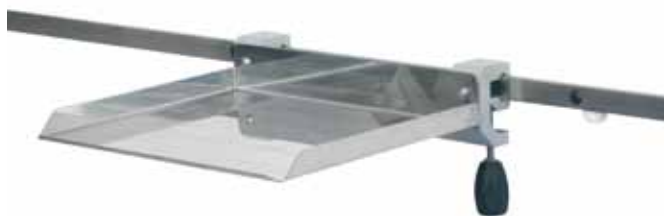
Ref. 815125

465 x 300 mm folding shelf (maxi 6 Kg)



Ref. 519060

365 x 290 mm shelf (maxi 10 Kg)



Ref. 519061

200 x 300 mm shelf (maxi 8 Kg)



Ref. 519134

420 x 330 mm swivelling scope shelf (maxi 30 Kg)



Ref. 815454

540 x 360 mm monitor shelf (maxi 40 Kg)



Ref. 519114

540 x 360 mm one drawer monitor shelf (maxi 40 Kg)



Ref. 519115

540 x 360 mm two drawers monitor shelf (maxi 40 Kg)



Ref. 519116

300 x 300 mm swivelling shelf on extension arm (maxi 10 Kg)



Ref. 915083

Sliding trolley for Ø 38 tube (without shelf)



Ref. 815325

450 x 350 mm shelf for Ø 38 tube (maxi 40 Kg)



Ref. 815470

450 x 350 mm tray with one drawer for Ø 38 tube (maxi 40 Kg)



Ref. 815465



Sliding trolley for two Ø 38 tubes (without shelf and drawer)



Ref. 815328

600 x 450 mm shelf for sliding trolley on two Ø 38 tubes (maxi 60 Kg - without drawer)



Ref. 815458

Wall holder for handset



Ref. 549150

3 functions DIN handset Ref. 517190

This unit ensures nurse call, reading lighting and general lighting control.

4 functions DIN handset Ref. 517193

This unit ensures nurse call, reading lighting, general lighting and one auxiliary control.

5 functions DIN handset Ref. 517191

This unit ensures nurse call, reading lighting, general lighting, and opening and closing electric store control.

DIN auto release plug connecting cable (for 517190, 517191 et 517193) Ref. 517200

Put within sight and protect from prying eyes

VESA 75 / 100 mm screen arm holder on tube (maxi 9 Kg)



Ref. 815339

Keyboard and mouse multi position arm holder



Ref. 815340

VESA screen two rotations arm holder (maxi 14Kg)



Ref. 519126

VESA screen two rotations arm holder on clamp (maxi 14Kg)



Ref. 815496

VESA screen three rotations arm holder (maxi 14Kg)



Ref. 519127

VESA screen one rotation arm holder on clamp (maxi 14Kg)

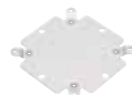


Ref. 815489

Privacy protection kit 140 x 230 cm Ref. 519067



Privacy protection kit 140 x 230 cm Ref. 519069



Mounting interface (for 519126 and 519127 arms)

Ref. 519131



Privacy protection mounting interface on rail

Ref. 815341



Privacy protection mounting interface on tube

Ref. 815090

Lamps that answer most of requirements

Mounted on a wall, a ceiling, on a rail or a tube, TLV proposes you lamps for reading, care or examination that offer lighting top performances. With their cutting the edge technology, LED ensure a powerful, comfortable and economical lighting. Units with integrated dimmer procure a lighting level fitting all the purposes to caring staff and patients.

Mounting systems that fit main situations

TLV proposes patented systems to ensure your products position on a wall, a ceiling, a rail or a tube, very simply thanks to a perfect ergonomy. In every situation, raw material Quality and cleaning easyness procures comfort and safety to all healthcare actors, within complying with budgets imperatives thanks to an excellent Quality / Price ratio.

Supports and mounting interfaces that ensure full safety for all products

Whatever the need to mount an equipment on a rail, a tube, a wall, the supply box of a ceiling pendant, a beam, a column, or to put an equipment on a shelf, TLV put at your disposal a complete range that offers the widest choice on the market. These products specifications has integrated easiness of installation, use and cleaning and decontamination thanks to high Quality materials and coatings, as stainless steel or EPOXY.

IV Rods that offer all security

Numerous products of TLV range offer a lot of solutions to put perfusions within reach within full safety whatever your caring space configuration. One hand height adjustment allows to customize perfusions position easily and quickly. Straight or angled, their hooks position, in line or perpendicula and their number procure many opportunities to optimize perfusions position.

Available and easy to order accessories

TLV brochure and pricelist pictures and specifications ensure a perfect purchasing in short delivery time to all our customers. This biomedical accessories range has been elaborated in close partnership with healthcare professionals, our staff stays to your disposal to study with your team a solution to bring to any new requirement.



Norms

- ISO 9001 2008 version
- EN ISO 19054 : Medical equipments rail holder systems
- EN 60598-2-25 + A1: Hospitals and homes caring departments lighting units
- EN 12464-1 : Working spaces lighting

All specifications are subject to modifications.

TLV

Ceiling pendants, Technical suspended Beams and Columns,
Technical Supply Units, Sealed Lightings,
Biomedical Equipments and Accessories

TRATO TLV Group

22, rue Molière, BP 369 59057 Roubaix - Cedex 1 (Lille), France
Phone : + 33 3 20 81 50 00 - Fax : + 33 3 20 81 50 19 - www.tlv.fr