

WIBE

defem



The Different System

defem

One visitor with two demands

The day before Christmas 1990, we had an unexpected visitor. It was an installer who wanted a different wire tray system.

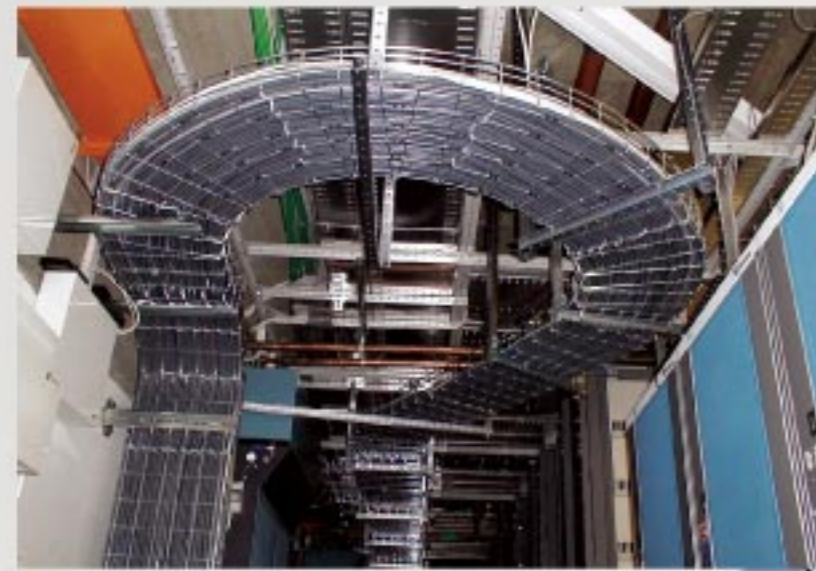
We were specialists in advanced wire welding. He was a specialist in complicated cable channelling.

Together with him, we started development of the Defem System - a Different System for cable channelling.

He had two requirements:



The three brothers Stjerneby; Benke, Sven and Lennart. Their father founded the wire welding company in 1954.



Maximum Strength.

Strength is a question of safety and...visual quality

Safety is about cable load, side load and accidental man-load. Also about durability, Equipotential bonding, etc. All safety aspects have to be approved by independent institutes.

Visual quality is about the customer. He will look at the installation for the next 20-30 years. He will remember the installer if it looks good.



Maximum Simplicity.

When the installer drives out for the job, he must expect the unexpected.

He has to finish the job with the material and tools he has brought to the site.

He needs maximum flexibility and minimum number of components.



Since March 2004, Defem is a part of AB Wibe in Mora, Sweden. Wibe is a part of Schneider Electric S.A. The Wibe product programme covers a wide range of cable support applications:

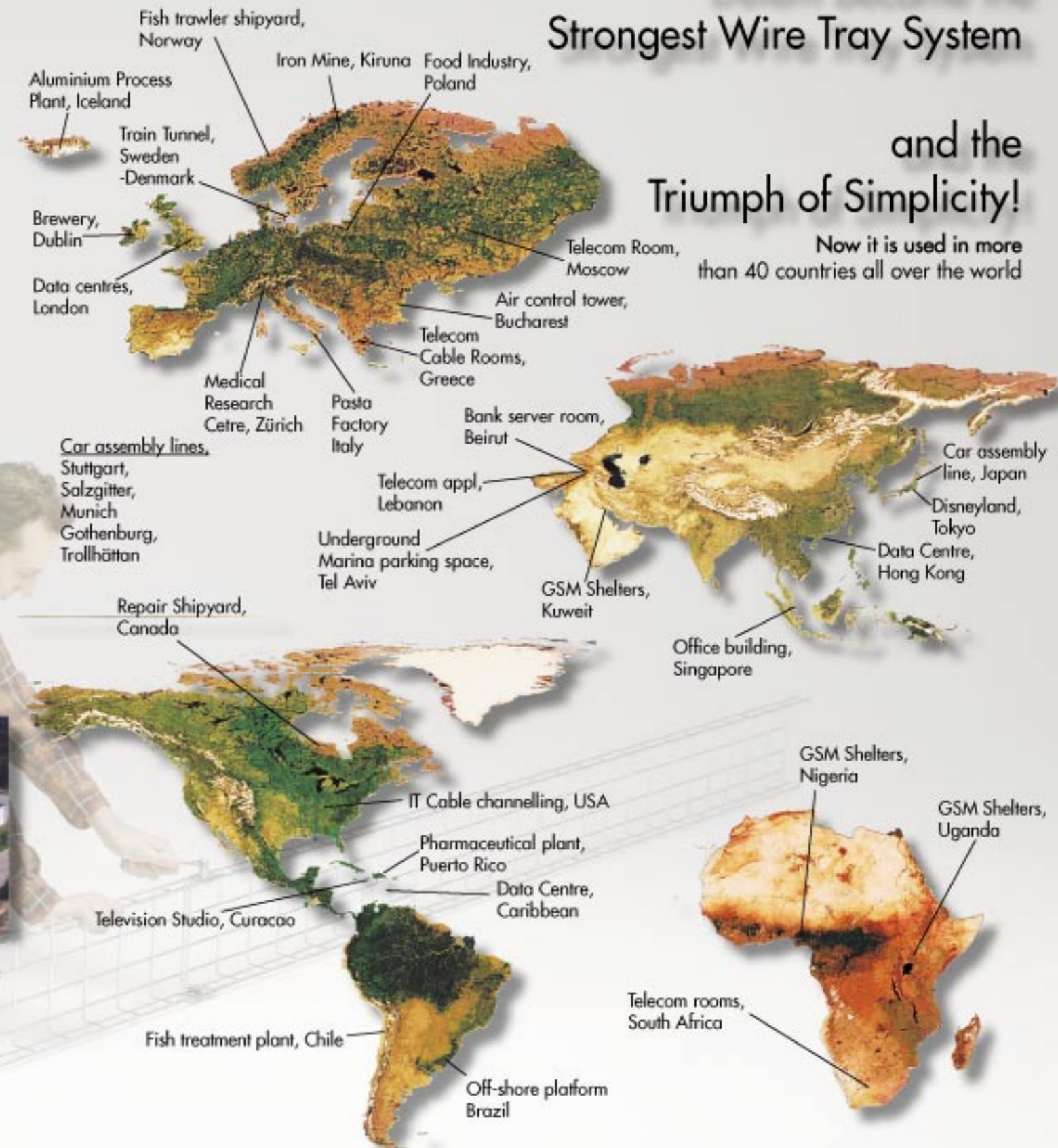
- Wibe cable ladder systems
- Wibe integrated ceilings
- Wibe cable trays
- Defem™ wire trays
- Defem CombiRack™
- Wibe lighting and communication masts



Defem became the Strongest Wire Tray System

and the Triumph of Simplicity!

Now it is used in more than 40 countries all over the world



Specific demands. Specific solutions.

- Automation
- Data centres
- Food ind.
- Infrastructure
- Machine building
- Offshore
- Pharmaceutical ind.
- Shipyards
- Telecom Rooms

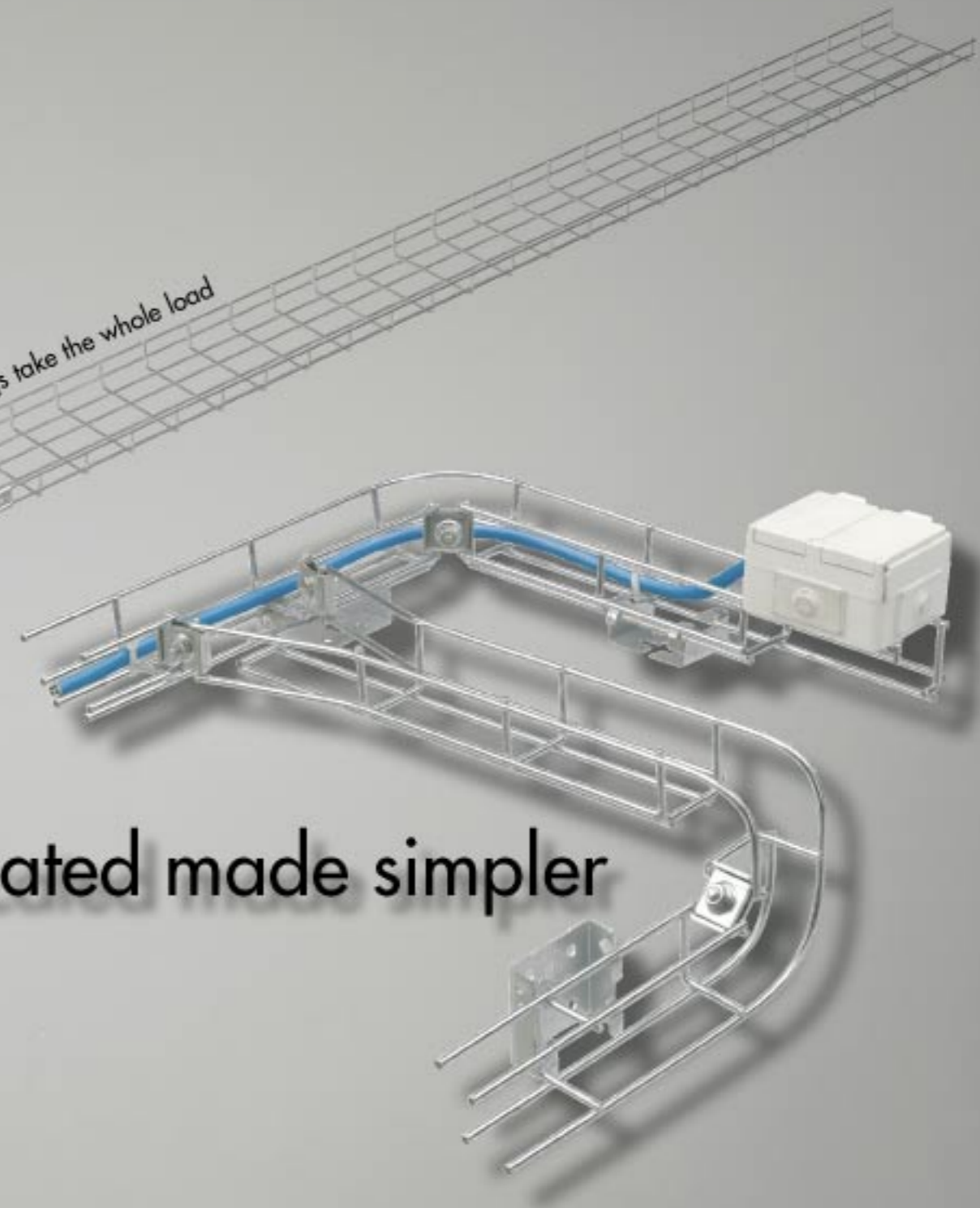
For these industries, Defem has developed special solutions. More info at www.defem.se

Reference list and more info at www.defem.se

Simple installations made quicker...



The practical strength test – two joining fittings take the whole load



...complicated made simpler

The strongest wire tray.



Extreme cable loads
- possible with Defem



In this application 2,5 metre support distance
- a substantial installation cost reduction!

The quickest mounting.



Most joinings are made at floor level. One man lifts 3 joined sections = 7,5 metre. Two men lift 5 joined sections = 12,5 metre

With minimum material.



One component
- more than 10 applications!



Catalogue and manual in one back pocket!

Many requirements - One System - Defem



Automation/Machine building
Bus cables, AS-I and Profibus, attached where you need them. Defem Clips 6, 8 and 10 mm.



Food industry
The most complete program with AISI 316L - the highest standard for food processing.



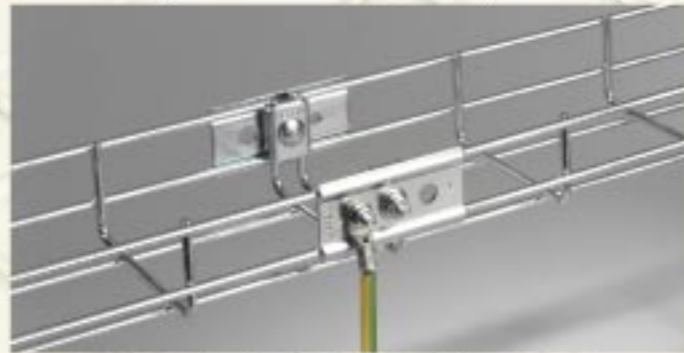
IT cable channelling - data centres
Cables moved, added and changed. In safe lanes with the Defem "Tore Concept".



Telecom Transmission room I
Separate levels for separate cables Full cable control with the "Tore Concept".



Protection
Defem safety caps for hands and cables. Use the full wire length for cable support.



Equipotential bonding
Use Defem as conductor. Tested and approved. No parallel copper, no "bridging" needed.



Fibre management
Full protection and full access with Defem separation system and bend radius limiter.



Telecom Transmission room II
The safest method for future flexibility: The Tore concept (www.defem.com/applications).



Complicated channelling
Defem was born in this application. High flexibility and high strength in one system.



Acid proof stainless
With Defem, only 316L for hygienic safety. No risk for bad choice. Be on the safe side.



CombiRack - installation
Unique flexibility for build-up, extension, renovation. Exactly how you want it.



Outdoor/Heavy duty
Weather and wear. Perfect for Defem. Hot dip galv. >80 µ. Tested for DNV.



Offshore/Shipyards
Defem used in North Sea and South Atlantic The simple system for difficult conditions.



Flexible mechanics
Defem U-bar system - build it to fit your IT room. Photo from Defem Training Room.



CombiRack - use
Full access - full control. Racking and cable channelling in one robust system.

Tests and approvals

Defem is tested to meet or exceed applicable parts of the International Electrotechnical Commission standard IEC 61537. The tests have been carried out by independent institutes.

SP Swedish National Testing and Research Institute:

Cable load capacity
Welding strength
Surface coating
Brackets
Vibration
Equipotential bonding
Accidental man-load
Ladder leaning on tray



iBMB - Fire test institute, Germany:

Test in fire chamber.
E 90 - 90 minutes
E 30 - 30 minutes



TÜV - Rheinland, Germany:

Equipotential bonding



Delta Institute, Denmark:

Cat 5/6 cabling

Telia Laboratory, Swedish Telecom:

Fibre optic cable



UL - Underwriters Laboratories, USA:

UL-approved

DNV - Det Norske Veritas:
Approved for use in offshore and shipyard industry



More at www.defem.com

Your distributor

More useful information!

If you want to know more about Defem System, we have lots of information to give you.

System Manual Cable Trays

For all cable tray installations

- Product catalogue
- Load capacity chart
- Specification info.
- Instruction manual



System Manual CombiRack

For special case IT Rooms

- Product catalogue
- Instruction manual
- Design with CombiRack
- Design with Cabinet Rack



Instruction Film Cable Tray

- Certified methods
- Time saving practices
- Safety aspects



Demonstration Film CombiRack

- Rack build-up and adjustment
- U-bar mounting
- Cable ducting
- Bend radius protection



Calculation Software

- Material need
- Project cost
- Cable tray installation
- IT room design



Get these and other support tools from www.defem.com/support

defem

AB Wibe Defem System
Box 228, SE-334 24 Anderstorp, Sweden
Tel +46 371 58 87 10, Fax +46 371 58 87 11
www.defem.se, E-mail: info@defem.se