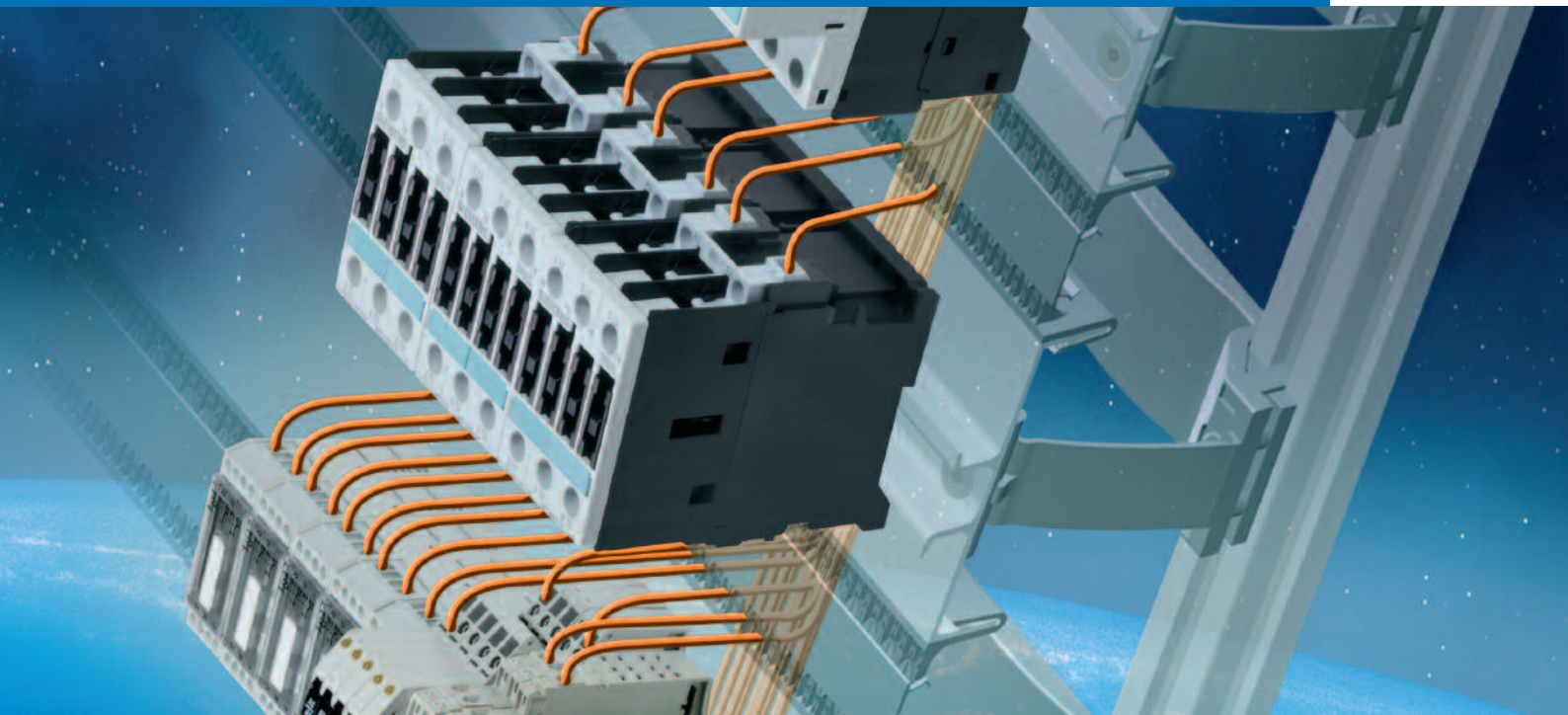


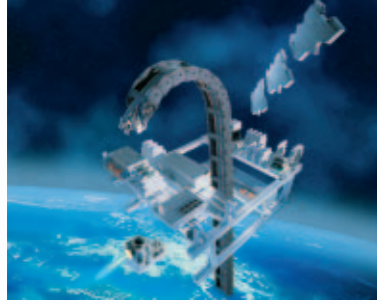
Lütze LSC Wiring System.

The major asset in your control cabinet: saves space, saves time, saves costs.

LSC Wiring System



Systematic Technology



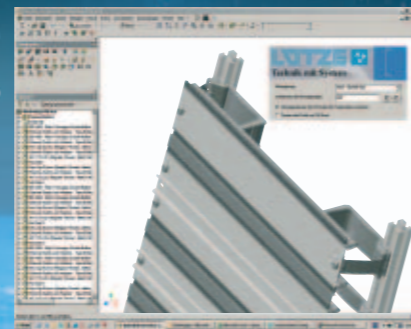
Space utilization in 3 dimensions: simply more compact than others



4



1 | Control cabinet design – Lütze style. Starting from your assembly plan ...



2 | ... via complete three-dimensional planning at Lütze

3 | ... right through to the complete frame, ready to wire.

5

Reducing dimensions means more than just saving space

Ongoing miniaturization did not stop before reaching control cabinet manufacture. A smaller, more compact design is increasingly called for – control space is becoming more expensive and economies have to be made. Use the original LSC System from Lütze and simply take advantage of another layer for wiring: in the depths of your control cabinet.

You save space on surface area – and so reduce the total volume needed. Construction in several planes with a single access plane increases your cost-benefit potential: by minimizing your control volume, shortening wiring times, as well as making the most efficient use of materials for the housing itself and the associated workshop area.



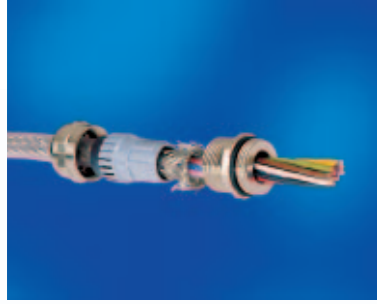
Conventional construction



LSC frame

We manufacture each aluminium frame for your wiring system in line with your needs. This means you can mount all your control components efficiently and integrate your wiring easily: no longer any need for cable trunking, no need for individually drilled holes or the chore of lining up the components.

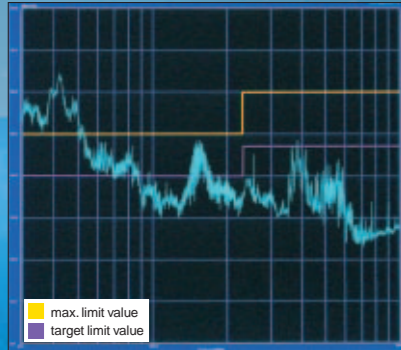
 Space saving



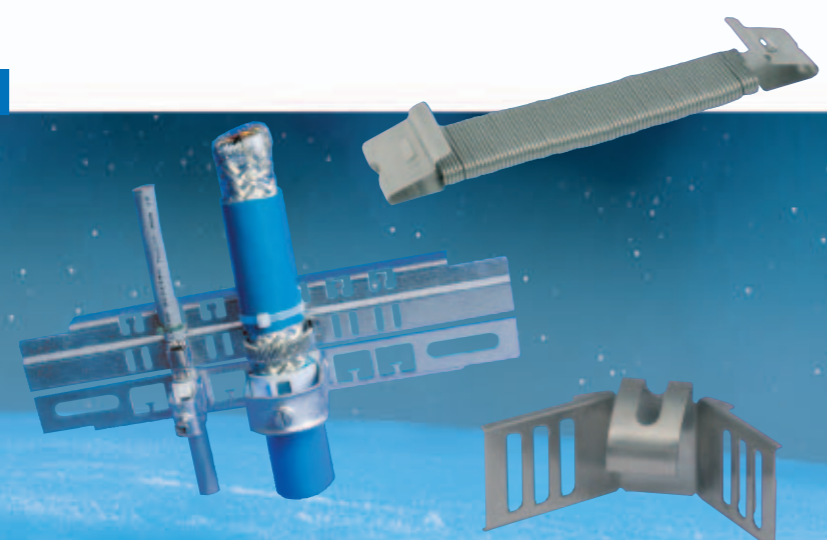
EMC compliant construction: the best protection from noise and interference



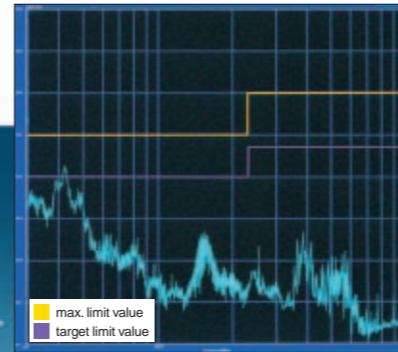
6



1 | Test results without EMC measures



2 | Lütze components for EMC-compliant wiring



3 | Test results using Lütze EMC components

7

Prevent failures due to EMC, save time and costs

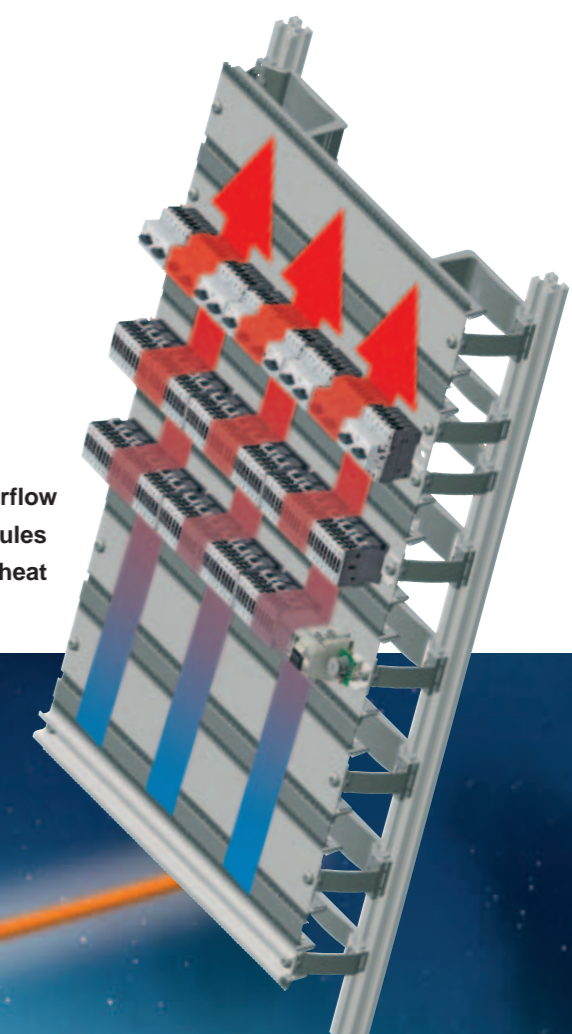
The evermore widespread use of PC-based controls, frequency inverters/servos as well as wireless data communication calls for increased effort in achieving noise-free plant operation. A high level of operational reliability can only exist if all EMC requirements are adhered to; this is most cost-effective when done directly in the construction phase.

With this in mind, Lütze offers a broad spectrum of components, ranging from shielding rails, components for DIN-rail mounting, flat braid ground connections up to shield clamps. Just as with the whole LSC system, these EMC components are simple to install - typical for solutions from Lütze. Whether you need shielded single-

or multi-core cables, we offer the right adaptation for each type. And despite the easy handling, a wide contact area always guarantees EMC shielding - not to mention welcome cost savings that result from the short assembly time.



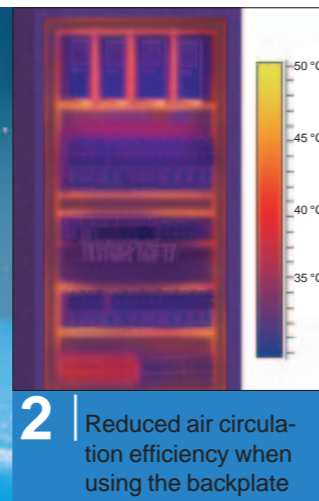
LSC-System Advantages: Improved working environment and greater stability in the control cabinet



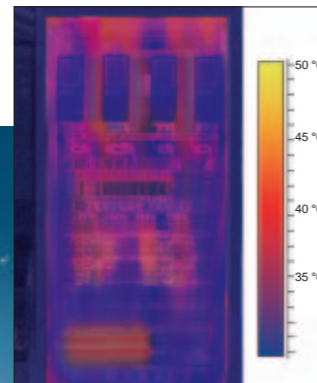
Unrestricted airflow
round the modules
permits better heat
dissipation



1 Heat generated by components



2 Reduced air circulation efficiency when using the backplate



3 Improved heat exchange with the environment with Lütze*

Avoid thermal stress, reduce downtime, save costs

In every control cabinet, components are becoming more compact. This does not however lead to a reduction in heat dissipation capacity, as the switching functions remain more or less the same. With LSC, the mounting plane and the wiring plane are separated, the air can freely circulate round the modules and cables

– dissipated heat is carried away. There is no transverse cable trunking to block the circulation. The cables are run on the backplane with plenty of clearance. This also promotes heat removal in that area.

*Schematic representation



Vibration and shock tested

Thanks to the screw-on fixing method of the profiles, the LSC withstands all vibration and shock tests and meets EN 61 587 without any restrictions. Independent testing of:

- continuous vibration from 5 – 100 Hz
- 5 g impact shock

guarantees long-term stability in all areas of usage – with certificate.





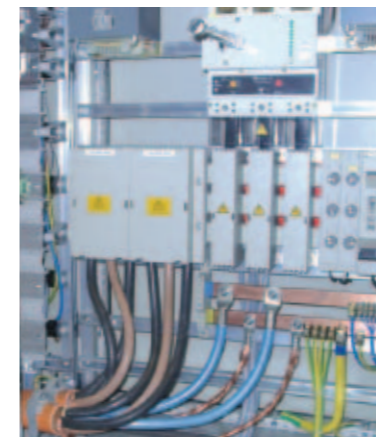
LSC in practice: complete frames make for neat and tidy solutions



Full service: we design, draw and manufacture to your wishes

The way to a solution for your control cabinet is remarkably simple: You supply us with your layout or even just a parts list – Lütze will do the rest for you. Thanks to our 3D design software you receive a realistic representation. This facilitates consultation and allows a quick, positive evaluation to be made. Lütze's engi-

neers will be happy to advise and support you in this. All the complete LSC frames shown here are taken from real individual solutions – with a minimum of time and effort on the part of the customer and maximum service from Lütze.



Deutschland

Friedrich Lütze GmbH & Co. KG
Postfach 12 24 (PLZ 71366)
Bruckwiesenstraße 17-19
D-71384 Weinstadt
Tel.: +49 (0)71 51 60 53-0
Fax: +49 (0)71 51 60 53-277(-288)
info@luetze.de

Lütze systems for highest industrial standards:

- Prepopulated
C-track systems
- Lütze-LSC-wiring
systems for all
standard control
panels
- Powerful modul- and
interface-technology
- Reliable suppression
technology
- Efficient power
supplies
- Automation systems
for harsh environments

United Kingdom

LÜTZE Ltd.
Unit 3 Sandy Hill Park
Sandy Way, Amington
Tamworth, Staffs, B77 4DU
Tel.: +44 (0)18 27 31333-0
Fax: +44 (0)18 27 31333-2
sales.gb@luetze.co.uk

USA

LUTZE INC.
13330 South Ridge Drive
Charlotte, NC 28273
Tel.: +1 (704) 504-0222
Fax: +1 (704) 504 -0223
info@luetze.com

Österreich

LÜTZE Elektrotechnische
Erzeugnisse Ges.m.b.H.
Tel.: +43 (0)1 257 52 52-0
Fax: +43 (0)1 257 52 52-20
office@luetze.at

Schweiz

LÜTZE AG
Tel.: +41 (0)55 450 23 23
Fax: +41 (0)55 450 23 13
info@luetze.ch

France

LÜTZE S.A.
Tél.: +33 (0)1 34 18 77 00
Fax: +33 (0)1 34 18 18 44
lutze@luetze.fr

Italia

Friedrich Lütze GmbH & Co. KG
Tel.: +39 039 928 49 36
Fax: +39 039 59 95 73
info@luetze.it

España

LUTZE, S.L.
Tel.: +34 93 285 7480
Fax: +34 93 285 7481
info@luetze.es

www.luetze.com



Systematic Technology