

# STÜTZISOLATOREN 1-3 KV

mit Schlüsselflächen,  
für Innenraum-Schaltanlagen

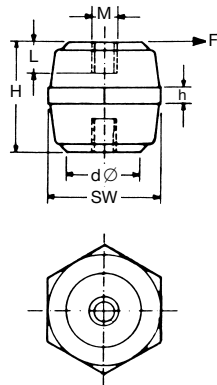


## Armaturen

1. Sacklochmuttern,  
Stahl, verzinkt

## Auf Wunsch

2. Messingmuttern
3. Stahlbolzen, verzinkt



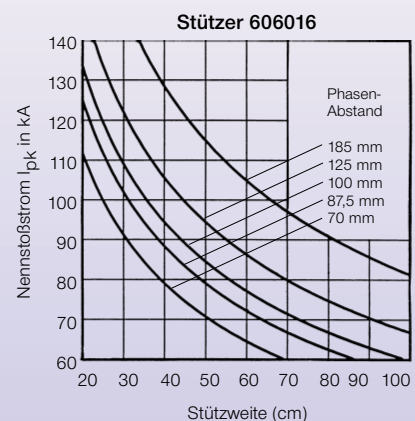
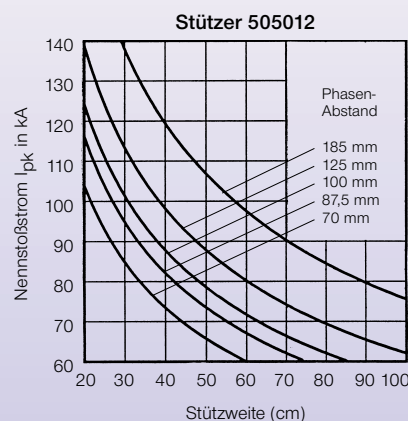
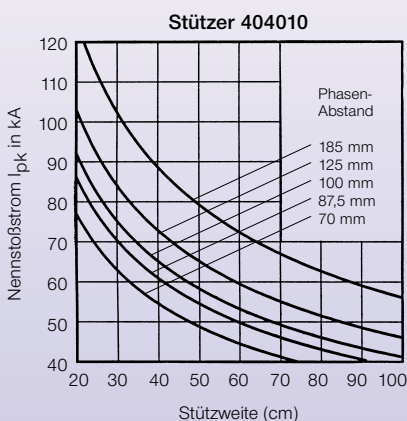
auch \*  
auch \*

Bestell-Nummer													
H	SW	M	L	d	h	F	Md	Z	D	BWS	PWS	G	
mm	mm	mm	mm	mm	mm	kN	Nm	kN	kN	kV	kV	kg %	
*	18	15	04	6	11	-	1,0	3	2	12	1,0	5	0,7
	20	20	05	7	14	5	1,3	6	3	20	1,0	5	1,2
	25	25	06	8	16	6	2,0	15	5	35	1,0	10	2,4
	30	30	06	8	20	6	2,5	20	6	45	1,5	15	3,8
	30	30	08	9	20	6	4,0	40	12	60	1,5	15	5,4
	35	30	06	8	20	6	2,0	20	6	45	1,5	15	4,5
	35	30	08	9	20	6	3,5	40	12	60	1,5	15	6,0
	35	30	10	9	20	6	4,0	50	16	75	1,5	15	7,0
	40	30	06	8	20	6	1,5	20	6	45	2,0	20	5,0
	40	30	08	9	20	6	3,0	40	12	60	2,0	20	6,6
	40	40	08	9	28	8	6,0	50	14	90	2,0	20	10,0
	40	40	10	14	28	8	8,0	90	20	100	2,0	20	12,0
	40	40	12	14	28	8	10	100	22	120	2,0	20	13,5
	40	50	10	14	32	8	12,5	120	23	140	2,0	20	16,0
	40	50	12	14	32	8	14	200	28	180	2,0	20	17,0
	50	40	08	9	28	8	5,0	50	14	90	3,0	25	12,0
	50	40	10	14	28	8	7,0	90	20	100	3,0	25	14,0
	50	40	12	16	28	8	8,5	100	22	120	3,0	25	16,0
	50	50	10	14	32	10	11	120	23	140	3,0	25	20,0
	50	50	12	16	32	10	13	200	28	180	3,0	25	21,5
	60	40	08	9	28	8	4,0	50	14	90	3,0	25	14,0
	60	40	10	14	28	8	6,0	90	20	100	3,0	25	16,0
	60	50	10	14	32	10	9,0	120	23	140	3,0	25	23,0
	60	50	12	16	32	10	11	200	28	180	3,0	25	25,0
	60	60	12	16	40	12	15	200	32	220	3,0	25	33,0
	60	60	16	20	40	12	18	300	37	240	3,0	25	35,0
	80	60	12	16	40	12	11	200	32	220	3,0	25	41,0
	80	60	16	20	40	12	15	300	37	240	3,0	25	43,0

## Abkürzungen

- SW = Schlüsselweite  
M = Gewinde (metrisch)  
F = Umbruchkraft  
Md = Drehmoment  
Z = Zugkraft  
D = Druckkraft  
BWS = Betriebswechselspannung  
PWS = Prüfwechselspannung  
G = Nettogewicht  
\* = zylindrisch

Für die folgenden Kurzschlußprüfungen gemäß VDE 0660/500 (Typprüfung) liegen uns Prüfprotokolle vor.



## Rohstoffeigenschaften

siehe SH 100 (Seite 3)

Die von uns genannten Daten unterliegen sowohl fertigungsbedingt als auch durch die eingesetzten Vorprodukte gewissen Toleranzen. Es handelt sich daher um Mittelwerte, also unverbindliche Richtwerte, aus denen keine Gewährleistungsansprüche abgeleitet werden können.

Änderungen vorbehalten!

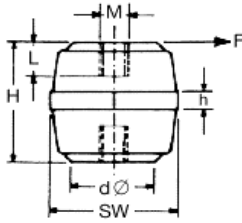
# PIN INSULATORS 1-3 kV made of polyamide

For indoor switching systems



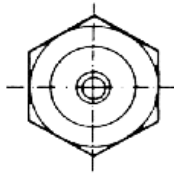
### Fittings

1. Tapped blind hole nut galvanised steel



### Upon request

2. Brass nuts
3. Steel bolts , galvanised

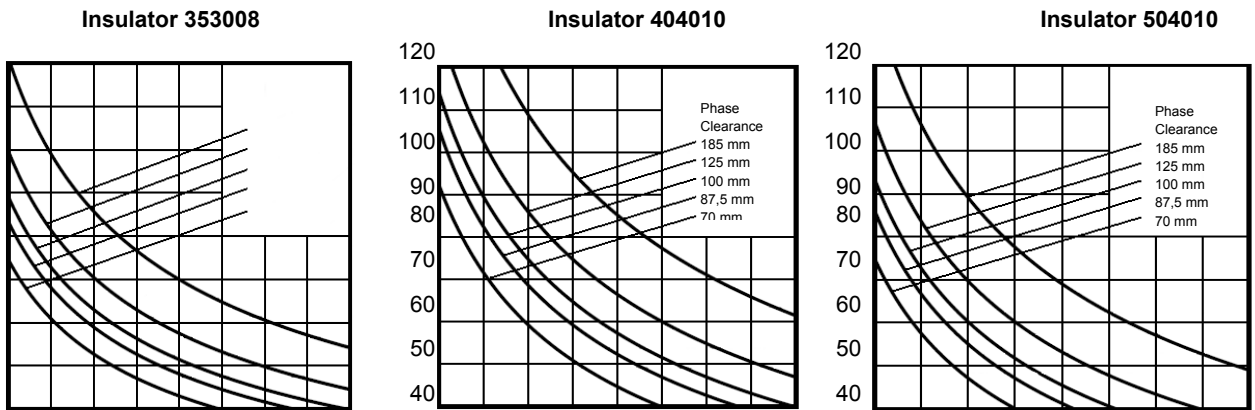


Order number			Technical details									
H mm	SW mm	M mm	L mm	d mm	h mm	F kN	Md Nm	Z kN	D kN	BWS kV	PWS kV	G kg%
19	15	04	6	11	4	1,1	3,3	2,2	13	1,0	5	0,6
26	25	06	8	16	6	2,2	17,0	5,5	38	1,0	10	2,0
31	30	06	8	20	6	2,6	22,0	6,8	49	1,5	15	3,0
31	30	08	9	20	6	4,2	44,0	13,0	63	1,5	15	5,0
36	30	06	8	20	6	3,2	30,0	10,0	50	1,5	15	5,0
36	30	08	9	20	6	4,0	50,0	18,0	60	1,5	15	6,0
36	30	10	9	20	6	4,4	55,0	20,0	66	1,5	15	6,0
41	40	08	9	28	8	8,8	60,0	18,0	95	2,0	20	8,0
41	40	10	14	28	8	10,0	95,0	28,0	100	2,0	20	10,0
41	40	12	14	28	8	12,0	105,0	30,0	122	2,0	20	10,0
51	40	08	9	28	8	5,5	60,0	18,0	92	3,0	25	10,0
51	40	10	14	28	8	8,0	95,0	28,0	100	3,0	25	12,0
51	40	12	16	28	8	9,5	105,0	30,0	122	3,0	25	14,0
51	50	10	14	32	10	12,0	132,0	25,0	140	3,0	25	18,0
51	50	12	16	32	10	14,0	220,0	30,0	180	3,0	25	19,5
61	40	08	9	28	8	6,0	55,0	16,0	92	3,0	25	12,0
61	40	10	14	28	8	8,0	99,0	22,0	100	3,0	25	14,0
61	50	10	14	32	10	10,0	220,0	30,0	142	3,0	25	21,0
61	50	12	16	32	10	12,0	220,0	33,0	185	3,0	25	23,0

### Abbreviations

- SW = Width across flats
- M = Thread (metric)
- F = Cantelever force
- Md = Torque
- Z = Tractive force
- D = Compressive force
- BWS = AC working voltage
- PWS = AC test voltage
- G = Nett weight

Material technical tests have been carried out for the following short circuit diagrams.



Fibre glass reinforced polyamide, flame protected and heat stabilised.  
 Free of halogen and phosphor.  
 Temperature range from -25 to +120 degrees Celsius

( further details upon request )

All datas that have been stated are subjected to certain tolerance deviations due to manufacturing processes and the pre-products that are used. Therefore these are non-binding average values from which no guarantee can be claimed of.

Changes reserved !